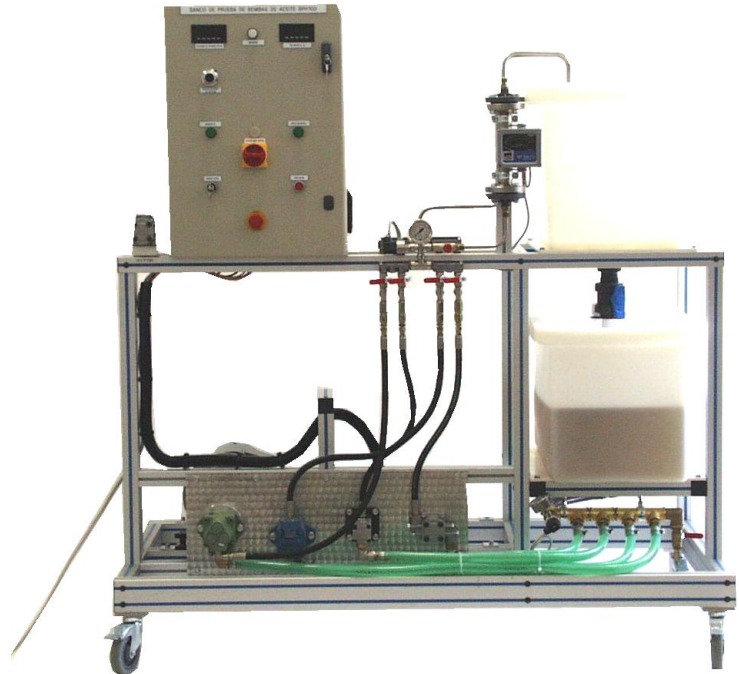


Hydraulic pumps test unit

DESCRIPTION

- The hydraulic pumps test unit is delivered complete with instrumentation, as well as technical documentation and suggested activities.
- Designed and manufactured to industrial standards
- Closed circuit



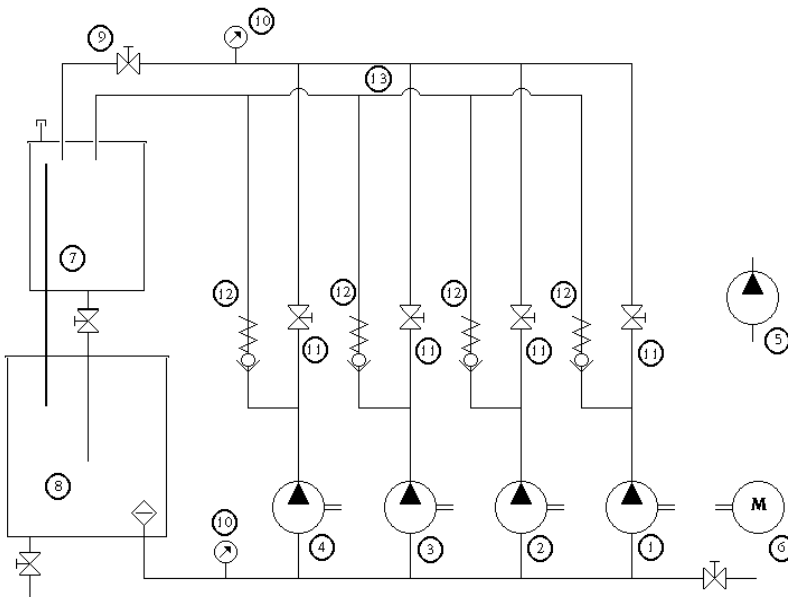
SUGGESTED APPLICATIONS

Study of four different designs for hydraulic pumps

Pump curves

- Power
- Flow-rate
- Pressure
- Speed
- Efficiency

BPH 100



1. Gear pump
2. Screw pump
3. Vane pump
4. Co-axial pump
5. Demonstration pump with plexiglass body
6. Variable-speed engine on rails
7. Upper tank 75 L
8. Lower tank 110 L
9. Fluid control valve
10. Manometers
11. Pump insulation valves
12. Safety valves
13. Hydraulic circuit

UTILITIES

Electricity : 230 V single-phase – 50/60 Hz

DIMENSIONS

Length : 1700 mm
Width : 785 mm
Height : 1840 mm
Weight : 160 kg