

## Two Water Pump Test Unit

### DESCRIPTION

- The test unit comes complete with instrumentation, and includes technical and instruction manuals.
- Equipment is designed and manufactured to industrial standards.
- Closed circuit operation.
- Two supplying tanks (in charge and suction)
- Stainless steel centrifugal pumps
- Transparent PVC pipes



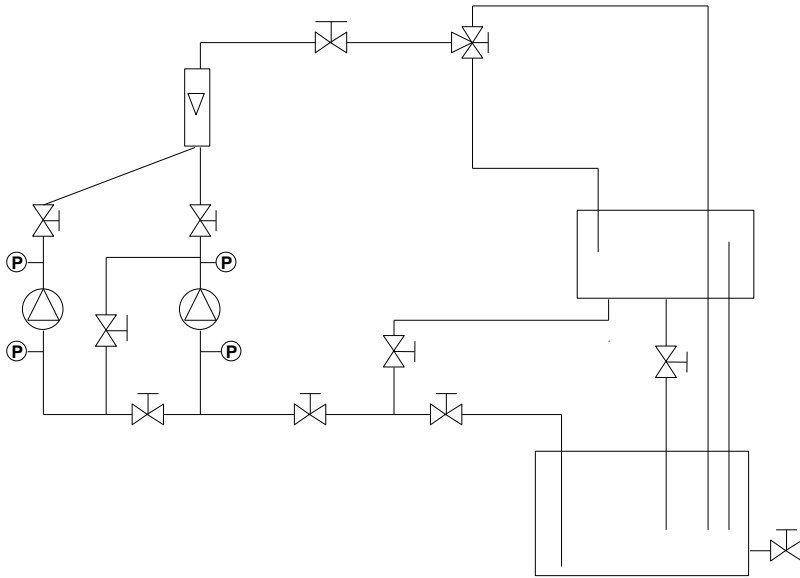
### SUGGESTED APPLICATIONS

Study of two similar designs for centrifugal pumps

Pump curves

- Power
- Flow-rate
- Pressure
- Speed

Pumps placed in series or parallel



## **UTILITIES**

Electricity : 230 V single-phase -50/60 Hz

## **DIMENSIONS**

Length : 1 600 mm  
Width : 800 mm  
Height : 2 000 mm  
Weight : 230 kg

## **Pumps**

Cast body  
Stainless steel axis  
Stainless steel turbine  
Waterproof : mechanical joint

## **Circuits**

PVC pipes and valves  
Filter

## **Water tank**

2 polypropylene tanks  
Overflow and drain

## **Flow-rate**

Rotameter

## **Manometers**

4 manometers BOURDON type  
2 for suction  
2 for ejection

## **Controls**

Electronic speed control through a potentiometer  
Inductive detector with speed indicator

## **Electric power**

Measurement of the power used by the functioning pump.