

Water pumps test unit

DESCRIPTION

- ✓ The water pumps test unit comes complete with instrumentation, and includes a technical and instruction manual.
- ✓ The unit is designed and manufactured to industrial standards.
- ✓ Closed circuit operation.



SUGGESTED APPLICATIONS

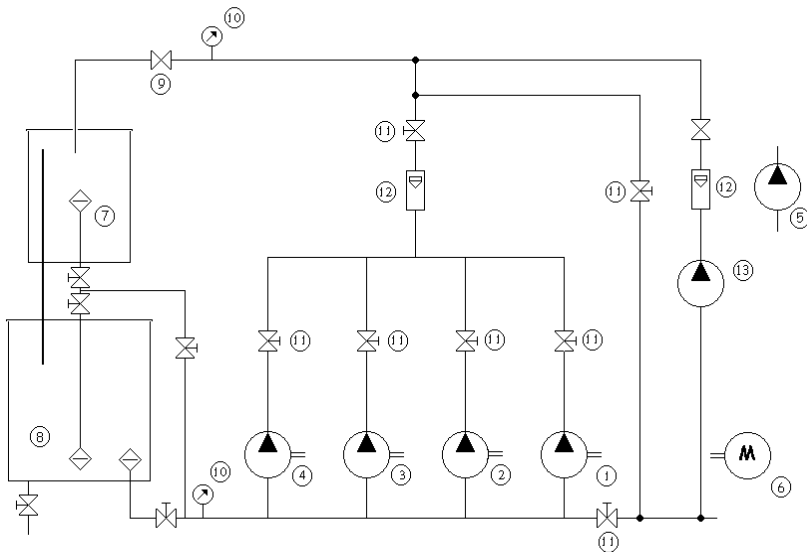
Study of four similar designs for water pumps

Pump curves

- Power
- Flow-rate
- Pressure
- Speed
- Performance

Load or suction pumps

BPE 100



- 1 - Multicellular pump
- 2 - Open wheel pump
- 3 - 120 diameter closed wheel pump
- 4 - 90 diameter closed wheel pump
- 5 - Demonstration pump with plexiglass body
- 6 - Variable speed engine mounted on rails
- 7 - Upper water tank
- 8 - Lower water tank
- 9 - Flow rate control valve
- 10 - Manometer
- 11 - Pump insulation valves
- 12 - Flow meter
- 13 - Electropump for mounting in series or parallel

- PVC DN 40 pipes
- PVC DN 32 pipes
- Transparent pipes
- Aluminium mobile structure
- Electric watertight box

UTILITIES

Electricity : 230 V single-phase – 50/60 Hz

DIMENSIONS

Length : 1590 mm – Width : 750 mm - Height : 1860 mm
Weight : 171 kg - Volume : 3 m³