

## Water hammer demonstration

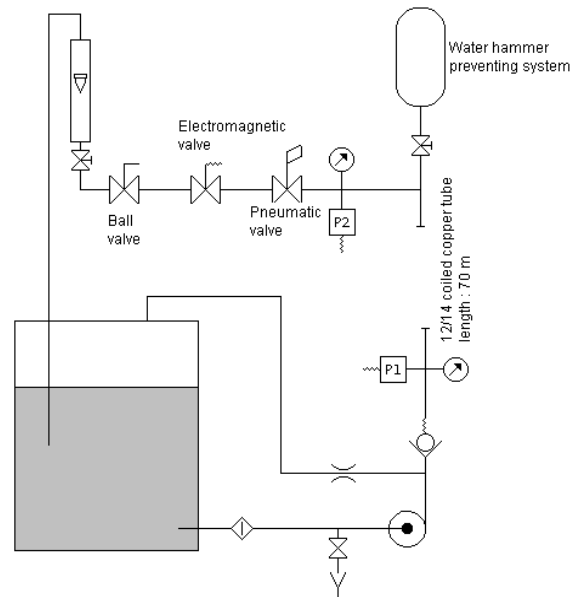
### DESCRIPTION

- The water hammer test unit is delivered complete with instrumentation and includes a technical and instruction manual.
- Designed and manufactured to industrial standards.
- This unit is suitable for different levels and various fields of study.



### SUGGESTED APPLICATIONS

Water hammer demonstration  
Determination of the speed of sound in the water.  
Determination of the loss of pressure.



Pressure is measured at two points located 70 m one from the other.  
Flow rate is determined by a variable area flow meter.

The test pipe is fed with water by a centrifugal pump.

The water hammer is demonstrated through a manual control valve with automatic, or pneumatic lock to optimise the flow stop.

The unit includes a double trace oscilloscope and memory.

## UTILITIES

230 V - 50/60 Hz

## DIMENSIONS

Length : 800 mm  
Width : 800 mm  
Height : 1600 mm  
Weight : 85 kg