

Heat pump

DESCRIPTION

- The heat pump unit is delivered complete with instrumentation and includes technical and instruction manuals.
- It is made up of a hermetically sealed compressor with a piston, a condenser and a coil shaped evaporator.

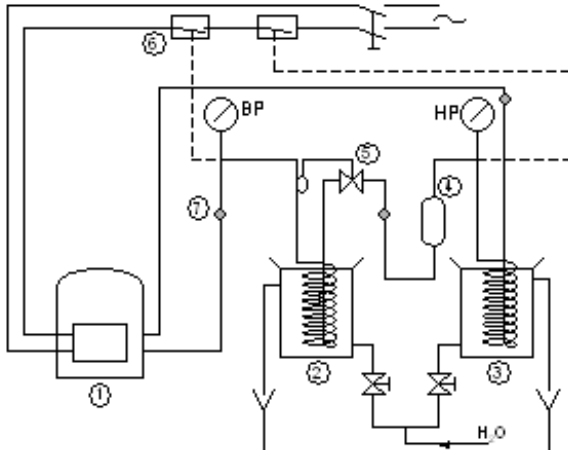
Two water tanks allow for the measurement of temperature during condensation and evaporation. The instruments enable one to read the pressures in various parts of the circuit as the refrigeration fluid goes through liquid and gaseous phases. These measurements allow for the calculation of heat exchanged at various points.



SUGGESTED APPLICATIONS

- Function of a heat pump and its different components.
- Use of the MOLLIER diagram of refrigerant R 134 a.
- Construction of the refrigeration cycle (H-logP)

CRD 100



1. Sealed compressor (refrigeration cycle)262 W at -5°C evaporation temperature)
2. Coil tub evaporator and its water tank of 1 litre
3. Coil shaped condenser and its water tank of 1 litre
4. Dehydrator filter
5. Expansion valve
6. Low and high pressure security
7. Liquid and gas indicator (3)
BP = low pressure manometer
HP = high pressure manometer

UTILITIES

Electricity : 230 VAC Single phased - 50 Hz – 1.1 A
Water : Water circulation (1 or 2 L/min)

INSTALLATION VOLUME

Length : 720 mm
Width : 360 mm
Height : 450 mm
Weight : 25 kg

SHIPPING DIMENSIONS

Length : 870 mm
Width : 730 mm
Height : 800 mm
Weight : 68 kg