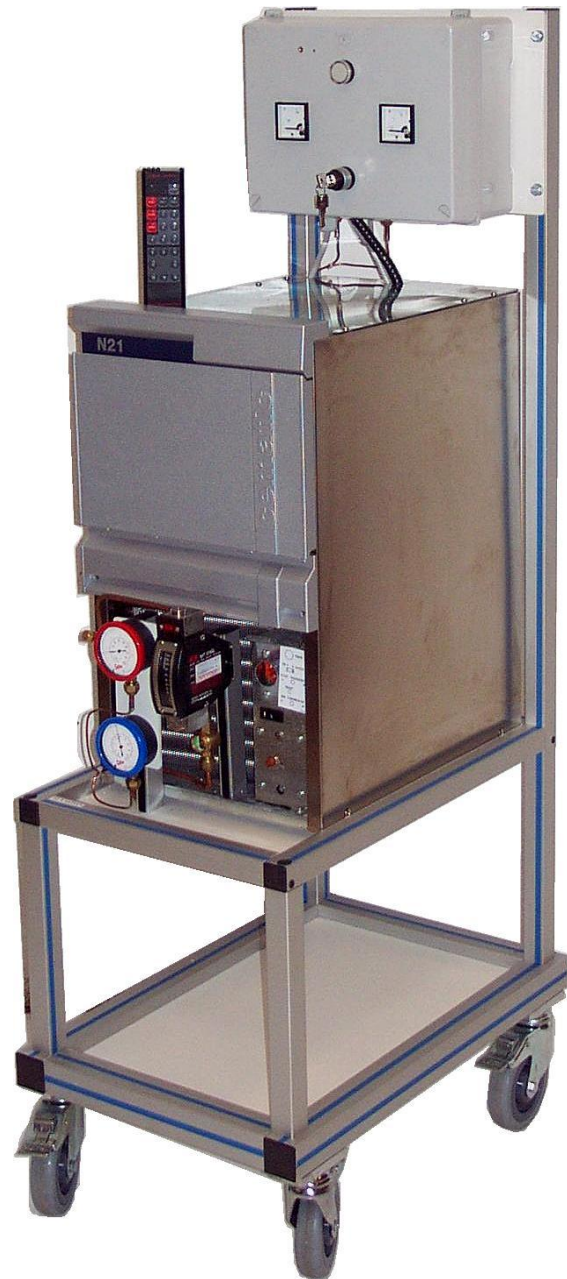


Maintenance unit of an ice cube machine

DESCRIPTION

- v The maintenance unit of an ice cube machine contains components, which mould the ice, remove ice cubes from the mould, and store them in a container.
- v The unit is of industrial quality
- v The instruments on the unit allow for the measurement and the adjustment of various functioning parameters.
- v The unit is delivered complete with instrumentation and with a technical and instruction manual.



SUGGESTED APPLICATIONS

FAILURE SIMULATION ON REFRIGERATION AND ELECTRIC CIRCUIT BY AN INFRARED REMOTE CONTROL

- Defect of the evaporator thermostat
- Defect of the ice tank overflow thermostat
- Defect of compressor
- Defect of condenser
- Defect of pump
- Defect of hot gas electrovalve
- Defect of water electrovalve
- Defect of timer

STUDY AND COMPUTATION

- Power at the compressor
- Power at the condenser
- Power at the evaporator

INSTRUMENTATION

- HP and BP manometer (high and low pressure)
- R134a flowmeter
- Portable thermometer
- Voltmeter and ammeter

Functioning and maintenance of an ice cube machine.
Mechanism of the moulding and removal from the mould of ice cubes.
Functioning of a refrigerating system, mechanism of inversion (for the removal from the mould).