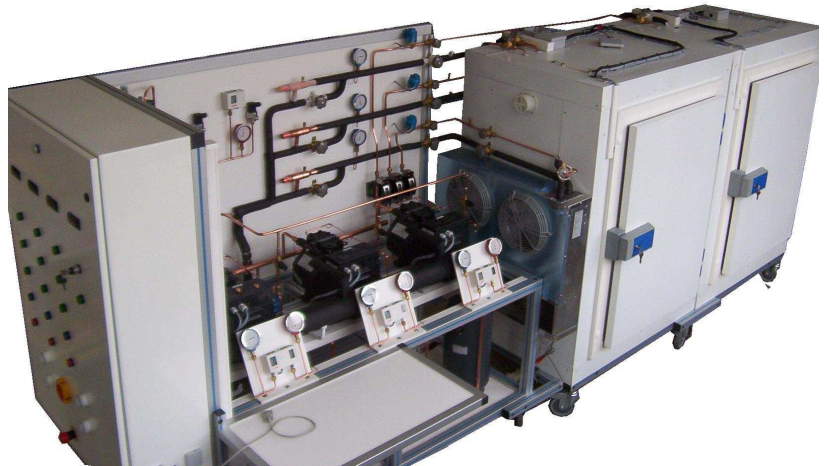


Refrigeration with many evaporation

DESCRIPTION

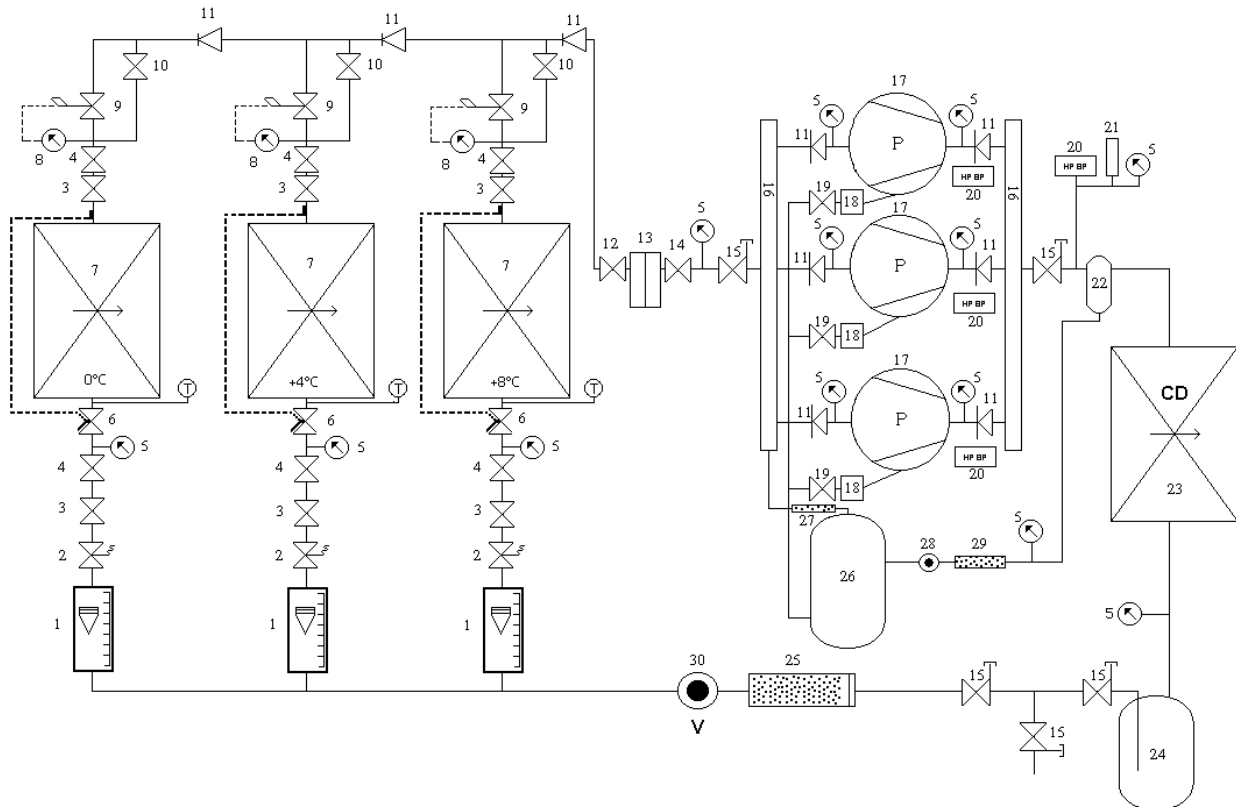
- The refrigeration with many evaporation unit is delivered complete, instrumented with technical handbook and practical works.
- Adapted to various levels and fields of studies.
- Designing, manufacturing and industrial materials.
- Utilisation of refrigerant R404A conforms to the new standards of the refrigerants.
- Composed of a power station PECOMARK, two doubles flow evaporators placed in two isotherm boxes, a third evaporator is placed in the environment.
- The unit has a shelf raise (800*500), two electrical connectors, as well as a block of arrangement to be able to place various documentations.



TEACHING APPLICATIONS

- Study of the basic concept of a cold store with the R404A, triple evaporation.
- Study of the thermodynamic cycle on enthalpic diagram.
- Study of the neutral regulation zone
- Calculation of the refrigerating powers to the condenser and evaporator.
- Total Output of the unit.

CRE 302



<p>Power station PECOMARK Winnow service Atmospheric condenser Tank of liquid Isolating valve Dehydrator Liquid indicator Flowmeter for evaporator with 0°C Flowmeter for evaporator with +4°C Flowmeter for evaporator with +8°C</p>	<p>Electromagnetic valve Thermostatic pressure reducer with external equalization of pressure Evaporator double flow with 0°C Evaporator double flow with +4°C Evaporator double flow with +8°C placed in environment Manometer Winnow with constant pressure Non-return valve</p>
---	--

Composition of the PECOMARK power station :

<ul style="list-style-type: none"> - 3 compressors 2 KC 05 2Y BITZER. - Resistances of casing. - Collector of aspiration stainless. - Filters of aspiration US48. - Valve of aspiration. - Pressure gauge HP/BP diam 100mm. - 1 pressure controller HP/BP by compressor (safety) - 1 general pressure controller HP safety with the DEVELOPING COUNTRIES standards. - 1 sensor 4/20mA BP. - 1 sensor 4/20mA HP. - 3 pressure controllers BP (regulation) 	<ul style="list-style-type: none"> - 3 pressure controllers HP (regulation) - Oil Separator + Tank + Valve + filter + electromagnetic sluice gate NO. - Regulator of oil with valves of insulation. - Vertical tank 60 liters. - Valve of safety. - Case filters dehydrator with replaceable cartridge. - Liquid indicator. - Liquid valve departure. Alarms optical level.
---	--

Composition of the isothermal boxes:

- Blowing of a power of 2000 W.
- Polyurethane Wall injected thickness 80mm.

Each evaporator is controlled by a room thermostat.

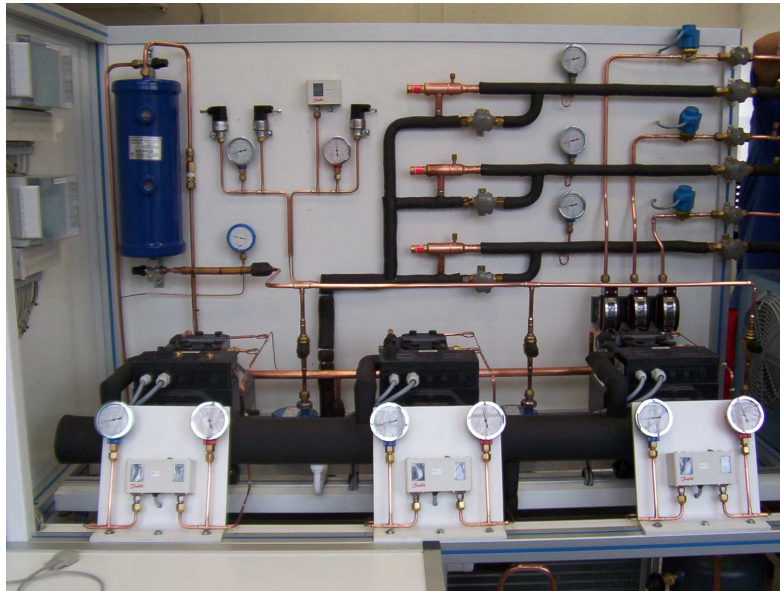
General regulation of type "neutral zone"

Digital display panel with probe of contact.

Manometer placed at the characteristic places of the system.

The whole being assembled on aluminium anodic frame posed on four multidirectional casters, this bench is conceived especially for a school use.

Manufacture of the bench following the standard ISO 9001 version 2000.



Dimensions et weight (non contractual)

Length : 2000 mm

Width : 1000mm

Height : 2000 mm

Weight : 400 kg

Utilities :

380V three phase

Evacuation of the condensed.