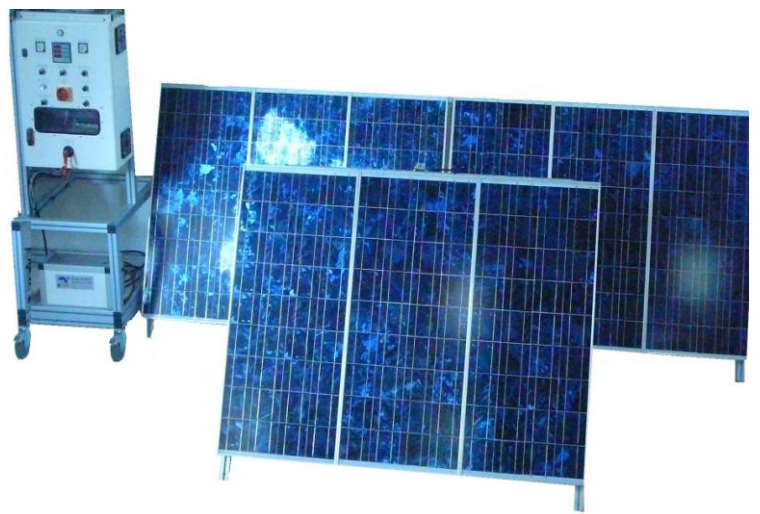


## Production and study of the solar electric energy

### DESCRIPTION

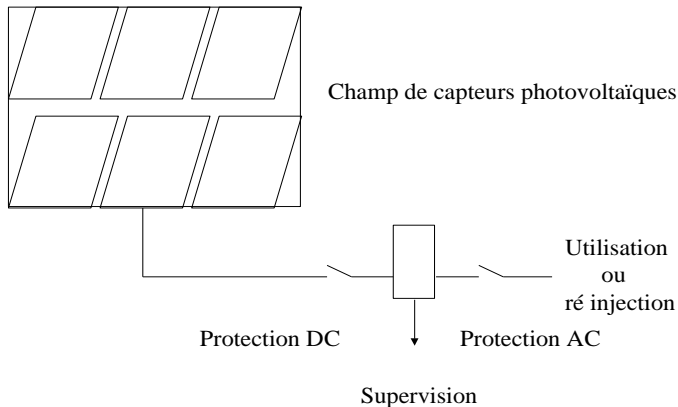
- This unit is delivered complete with technical manual.
- Design, production and industrial equipment.
- 6 modules polycrystalline 120 Wc 12V with tempered glass frontal front.
- Inverter 900W for the network injection.
- Module of supervision
- The instrumentation allows to measure every electric parameter of the installation (power, tension, current).



### SUGGESTED LESSONS

- Study of the solar panel
- Study of the output
- Study of the influence of the panel orientation
- Calculation of the efficiency
- Calculation of the output
- Setting of experiences

## TECHNICAL CHARACTERISTIC



### The unit is composed of :

- Six modules polycristalline 130 W 17,7V
- Inverter 900 W for the network injection.
- Protection AC.
- Protection DC
- Below supervision detailed

The inverter is connected to the communication interface ( RS 485 / RS 232 ) allowing to connect it to a PC .

#### Noted parameter :

- Entry tension.
- Entry power.
- Network tension.
- Network power.
- Frequency of the network.
- Injected power.
- Injected energy.
- Service period.

This tool allows to watch in direct the installation, to realise diagram of every parameter.

It is also possible to record different information for 200 days.

Our service is limited to the delivery of the equipment ( inverter, supervision, connector industry, protection case AC, protection case DC, fixation support of the component), support installation for the photovoltaics panel.

#### Remain with your load :

- Realisation of electric joining.
- Ask EDF to set up a network injection.
- Fixation of electric component on a support.