

Water treatment for air conditioning equipment

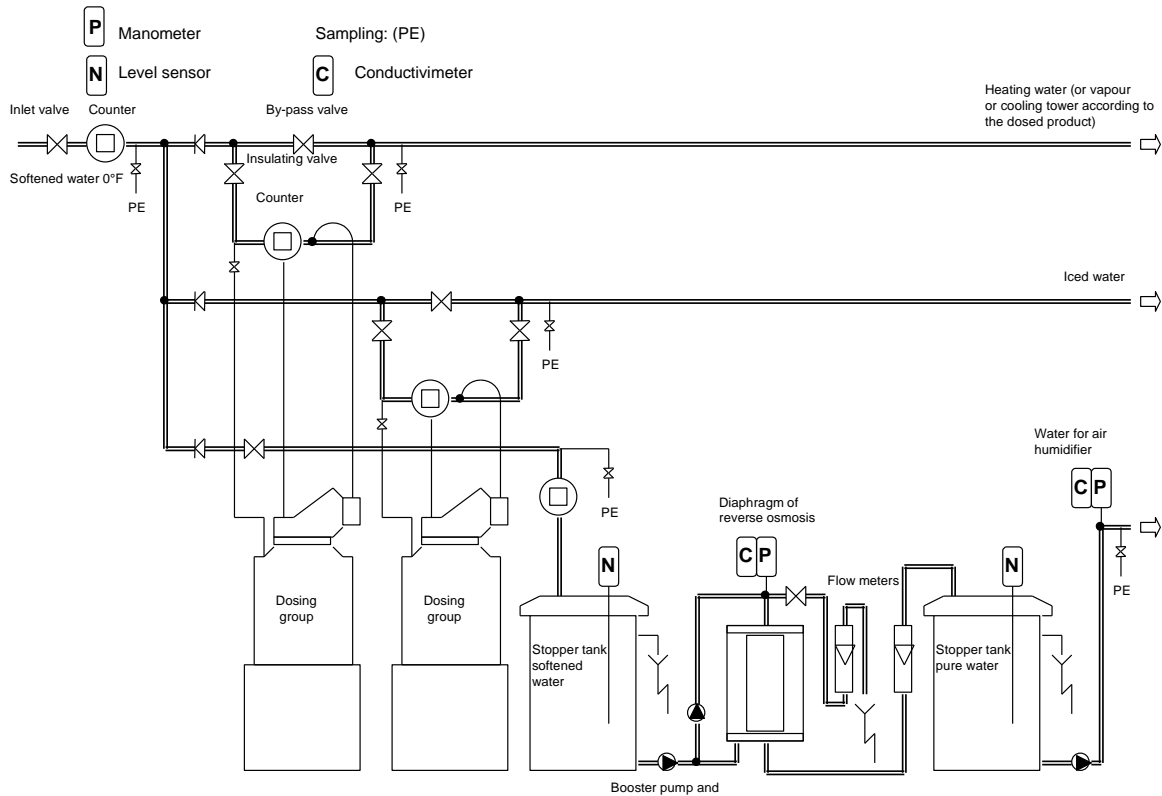


DESCRIPTION

- v This unit consists of the elements needed for the treatment of water that will supply air conditioning equipment. These elements are mounted on an extruded aluminium frame with wheels making it easy to move.
 - v This unit prepares water for use by air conditioning equipment by the process of reverse osmosis. (Another alternative would be soft water but a water softener is not part of this unit) This unit can also utilize water from a water softener and prepare it for use by air conditioning equipment.
 - v Water arising from reverse osmosis group and water coming from a softener are kept separate so that either can be selected.
 - v The reverse osmosis system is complete with instrumentation to allow for a complete study of the process.
 - v Stainless steel tubes are used to conduct the water from one point to another in the system.
- The unit is delivered complete with instrumentation, technical documentation, and instructions for use.

SUGGESTED APPLICATIONS

- Purpose of water treatment
- Basic concepts involved in the treatment of water for air conditioning.
- Function of the various components
- Preparing water by reverse osmosis and using it in the air conditioning system
- Treating softened water for use in the air conditioning system.



CONSTITUTION OF THE UNIT

Counter

Two dosing groups for water treatment (e.g.: corrosion inhibitor for heating and antifreeze for iced water)

Reverse osmosis group (diaphragm, filter body, booster pump and return pump, inlet/outlet conductimeters, flow meters)

Stopper tanks at the inlet and the outlet of the osmosis unit

Charging pump at the pure water outlet

Various sampling access points

DIMENSIONS :

Length: 2500 mm

Width: 800 mm

Height: 1700 mm

Weight: 250 kg (without water)

UTILITIES

Electricity : 220 V / 50 Hz

Network water and drainage