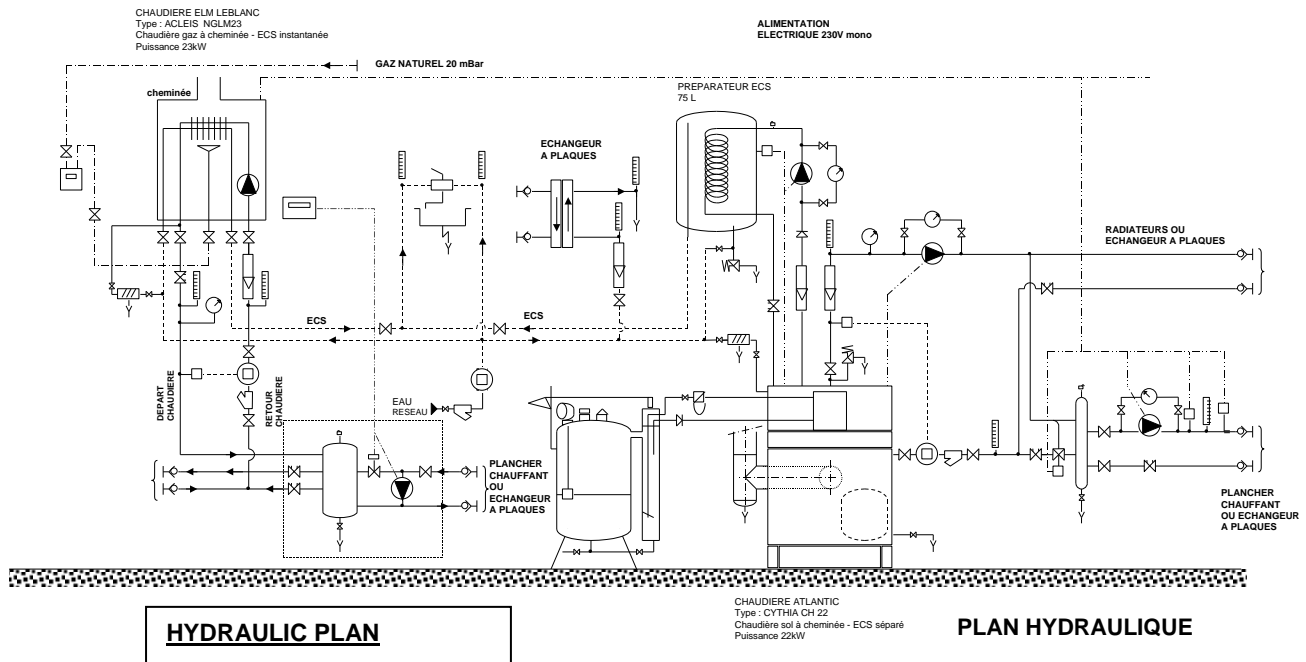


Bench of production of hot water



- ◆ The bench of production of hot water is composed of two boilers (fuel on the ground and gas mural) and of a medical hot-water tank.
- ◆ The boilers feed two circuits on two levels of temperature.
- ◆ The boiler on the ground fuel heats domestic hot water of the balloon via a serpentine.
- ◆ The mural boiler is equipped with a system of preparation of instantaneous ECS.
- ◆ Bench TCF210 is connected to a unit of dissipation made up of 6 radiators, two modules floor heating and a small unit heater.
- ◆ Part of produced energy can be dissipated on an exchanger with plates which functions out of lost water on the network.
- ◆ The produced domestic hot water is evacuated via a stainless steel sink fixed at the bench and equipped with a mixing valve.
- ◆ The bench is delivered with its teaching handbook and its didactic interest is directed towards the formations of energy genius.

DESCRIPTION OF THE BENCH



1. PRODUCTION OF HOT WATER PER BOILER ON THE GROUND FUEL

Boiler on the ground with fuel CYTHIA EVOLUTION 1CH22, kit heating floor, kit radiators kit probes ECS Preparator ECS 75 L, groups safety and Anti valve thermosiphon. The ECS feeds the sink located on the left (common run at the two sides)
 Surge tank PNEUMATEX
 Valve of safety 3 bar
 Circulator ECS UPS 25-55
 Fast connectors on exits
 meter of calories
 Flowmeters water ECS and heating
 thermometers with dilation of liquid 0-100°C
 dial pressure gauges \varnothing 100mm
 Valves of balancing MT 3/4 (2)
 Valves of balancing MT 1/2 (2)
 Automatic drainers
 dielectric connections
 disconnecting
 chimney (2t \acute{e} + purging + 2 length 1m)
 regulator of pulling
Tank fuel 30 L equipped with a reserve of measurement (see chart TAN 030)

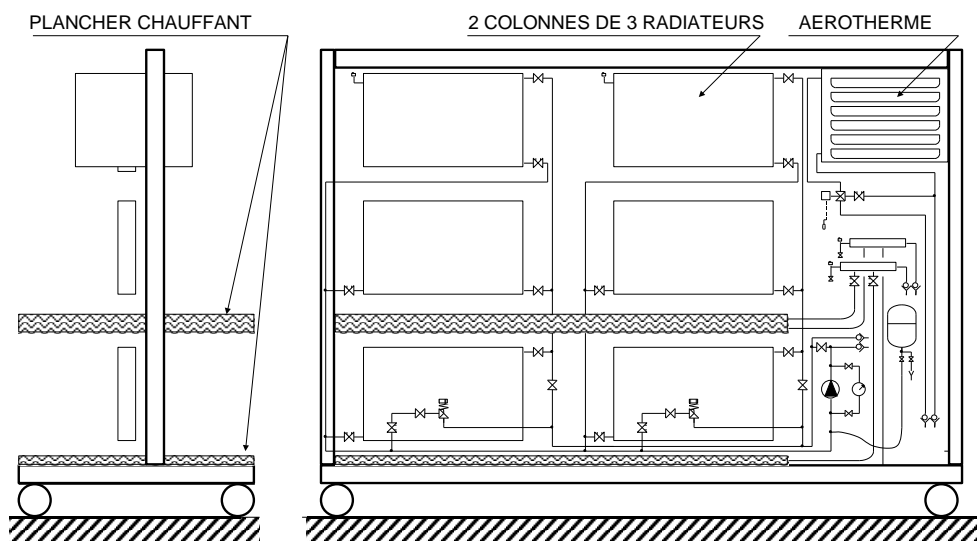
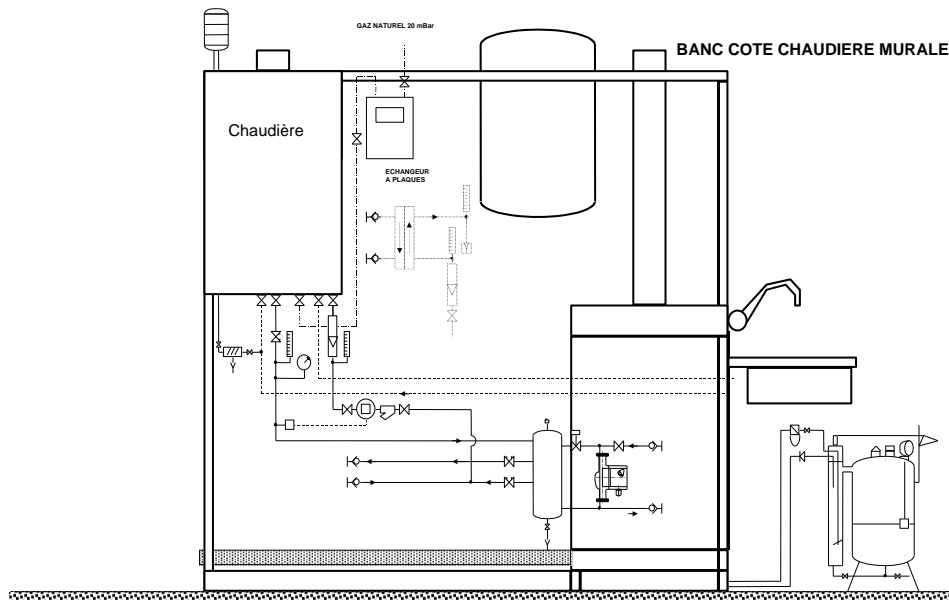
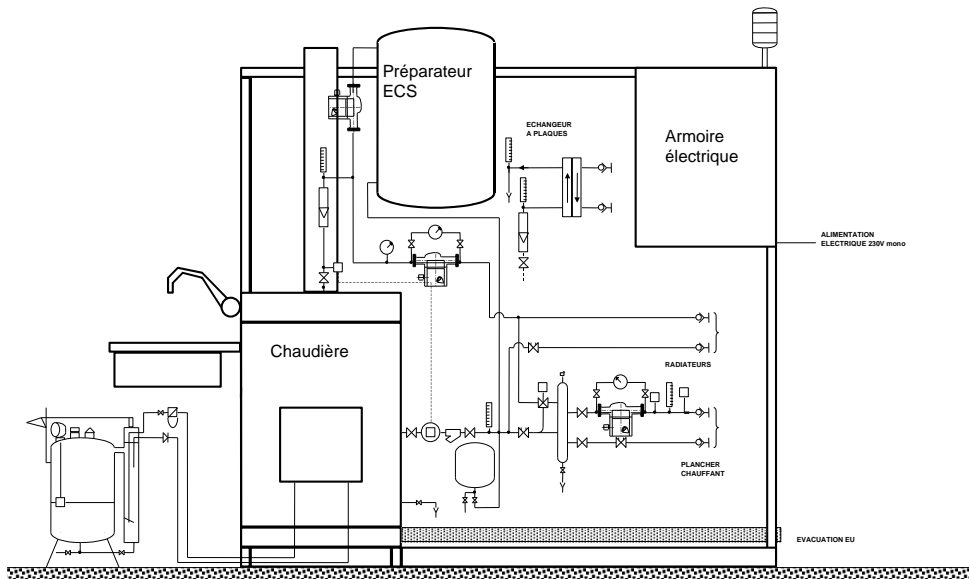
2. PRODUCTION OF HOT WATER PER MURAL BOILER GAS

Mural boiler with chimney CENTORA 2.24CF GN, ECS instantaneous outputting on the sink
 Modulate heating floor THORIX and its regulation meter gas
 Primary education circulator UPS 25-80
 Fast connectors on exits (4)
 meter of calories
 flowmeter
 Flowmeters water ECS and heating
 thermometers with dilation of liquid 0-100°C
 disconnecting
 Valves of balancing MT 3/4 (2)
 Valves of balancing MT 1/2 (2)
 Automatic drainers

3. ELEMENTS COMMON TO BOTH CIRCUITS

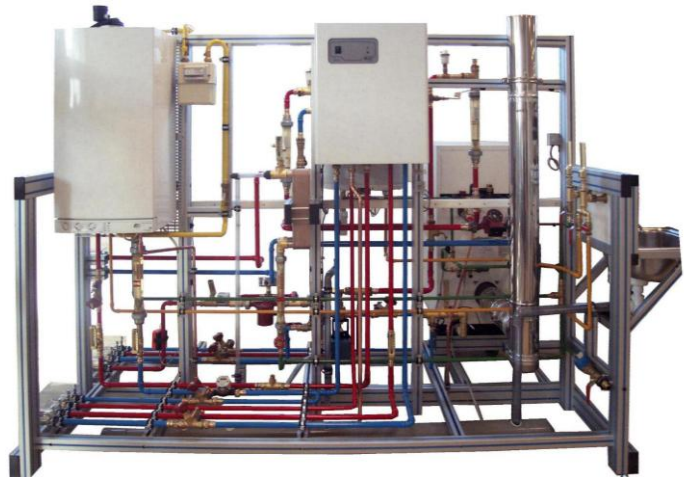
Electrical equipment box (with glass casing of indication)
 Water supply: winnow, filter, meter, disconnecting
 Sink stainless with mixing valve
 Thermometers (2)
 Exchanger with plates
 Fast connectors on exits exchanger
 Fast connectors on flexible devices
 Flexible devices of connection with connectors
 Evacuation water used on PVC \varnothing 100 with exit \varnothing 32

TCF 210



UNIT OF HEATING FLOOR - UNIT HEATER - RADIATOR

TCF 210



Face postpones bench



Sink



Bench of dissipation

DIMENSIONS

Length: 720 mm
Width: 360 mm
Height: 450 mm
Weight: 25 kg

UTILITIES

WATER: network 3 bars
ELECTRICITE: 230Vmono
SMOKE: two exits
Chimney \varnothing 139mm
Drainage used to envisage

The utilities must be with a maximum of 2,5m of the installation