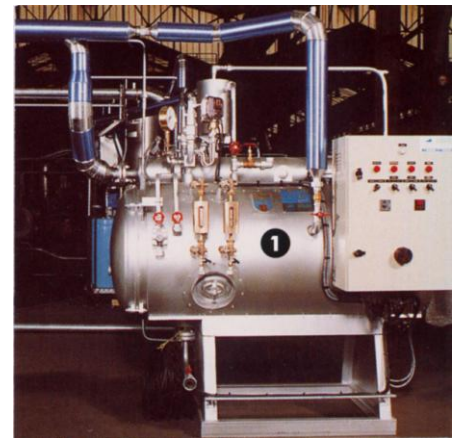
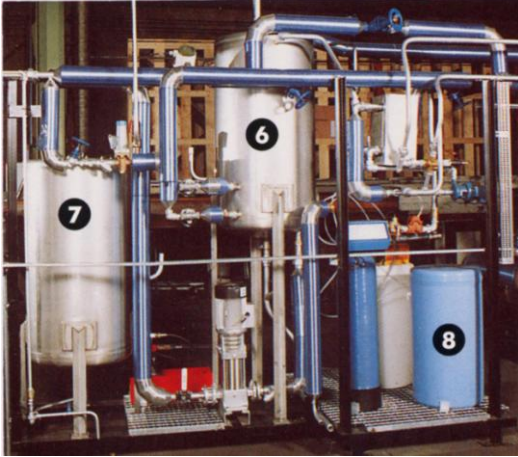


TVP 300

Vapour production and supply



The vapour production and supply unit is delivered complete with instrumentation and with technical documentation and instructions.

The unit is designed for teaching at various levels in the fields of energy engineering and maintenance.

Suggested applications

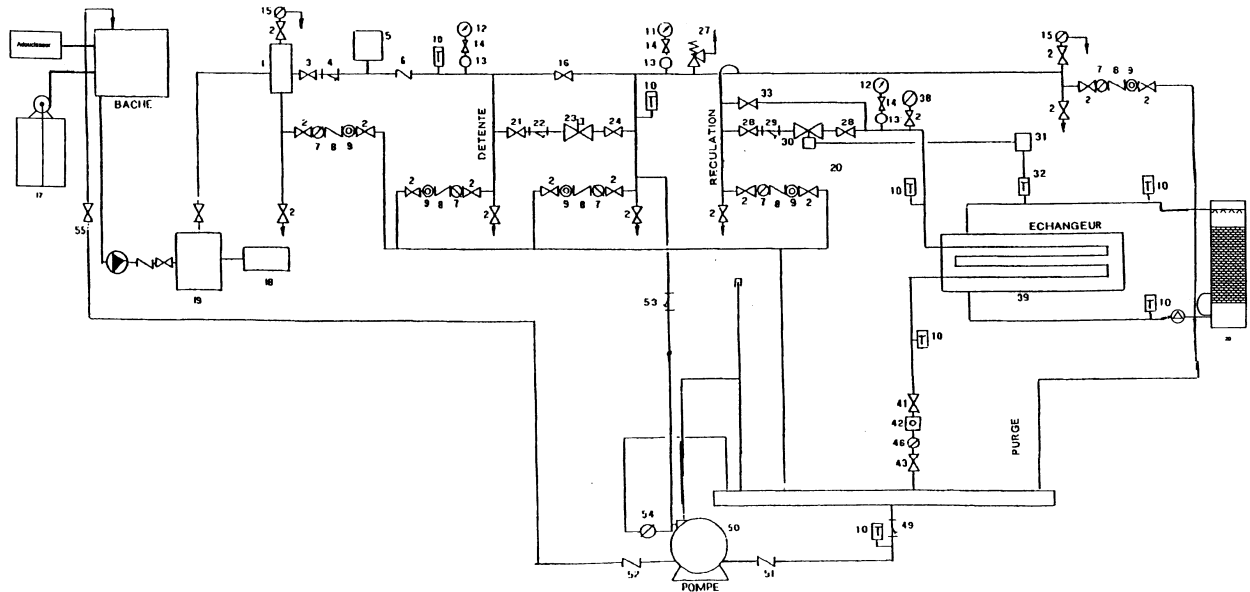
⇒ **Practical experience with real heating elements**

- Installation
- Starting
- Adjustment
- Optimisation of the efficiency
- Identifying components and determining their function
- Selection of appropriate equipment for various tasks
- Preventive maintenance and problem solving
- Heat exchanges
- Heat transfer
- Safety equipment

⇒ **Use of the instrumentation**

- Assessment, efficiency, power
- Parameters
Flow – pressure – temperature – loss of charge
- Measurement of emissions in the chimney
- Coefficient of transmission
- Inertia
- Coefficient and regulation

Description



- | | | | |
|-------|--|----|---|
| 1 | DN 20 flange steel separator | 27 | DN 3/4" bronze valve with setting lever 2 bars |
| 2 | 1/2" automatic isolating valve | 28 | DN 25 flange iron bellow / globe automatic insulating valve |
| 3 | DN 20 flange iron bellow automatic isolating valve | 29 | DN 25 flange iron filter |
| 4 | DN 20 flange cast iron filter | 30 | Electric temperature regulating valve 220 V 50 Hz DN 15 |
| 6 | DN 50 non return valve | 31 | Electric regulator - output 4-20 mA - input Pt 100 Ω |
| 7 | Thermodynamic trp with 1/2" vent disc | 32 | 1/2" Pt 100 probe – 3 wires |
| 8 | 1/2" check valve | 33 | DN 15 flange iron piston by pass valve |
| 9 | 1/2" sight flow indicator | 38 | 1/2" vacuum breaker |
| 10 | Thermometer (0/200°C) with copper finger bar | 39 | Horizontal U tubular heat exchanger |
| 11-12 | Manometer (0-6 bar - 0-16 bar) | 40 | DN 15 flange magnetic gauge |
| 13 | 1/2" steel bend for manometer | 41 | 1/2" automatic insulating valve |
| 14 | Steel valve for 1/2" manometer | 42 | Threaded detection chamber – Indicating box |
| 15 | 1/2" air trap | 43 | 1/2" brass check valve |
| 16 | DN 15 flange iron piston by pass valve | 44 | 1/2" open reversed float trap |
| 17 | Water treatment | 48 | 1/2" closed float trap |
| 18 | Fuel-oil tank | 49 | 1" filter |
| 19 | Steam boiler | 50 | Pump |
| 20 | Cooling tower | 51 | 1" swing inlet check valve for pump |
| 21 | 3/4" iron piston automatic insulating valve | 52 | 1" threaded outlet valve |
| 22 | 3/4" iron filter | 53 | 3/4" filter |
| 23 | 1/2" direct acting independent reducing valve | 54 | 1/2" trap |
| 24 | 1" iron piston automatic insulating valve | 55 | 1" automatic insulating valve |

Specifications

The components have been designed and manufactured to meet industrial standards.

Optional extras

- Portable measuring equipment
- Connection to equipment which uses vapour
- Water treatment

Dimensions

Adjustable to different workshop configurations

Length	4 m
Width	3 m
Height	2.5 -3 m
Weight	3.2 t

Utilities

Water
Gas
Fuel
Electricity
Discharge
Chimney

Shipping specifications

Packing sizes :

Length	5 m
Width	1
Height	1,8 m
Global weight	4 t