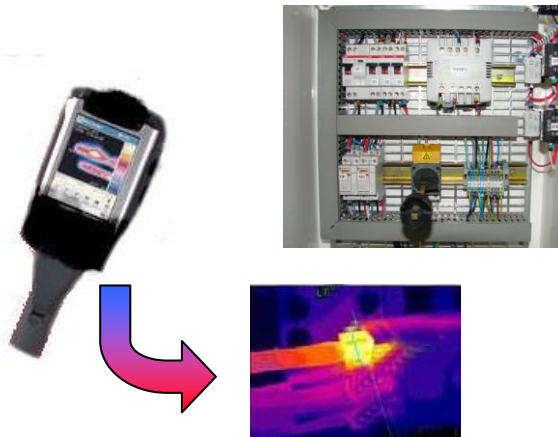


Bench of maintenance by infra-red thermography

DESCRIPTION

- The bench of maintenance by infra-red thermography is especially conceived for the applications of maintenance electric, electrotechnical, thermal and mechanical installations
- The MTI 100 is delivered complete with kits of defective parts, handbook, technical multimeter file, thermometer with contact and case of arrangement
- Design, manufacture and industrial material.
- Implemented to simplify TP (time of installation of the reduced TP).
- The didactic interest of the MTI 100 is directed towards various levels and fields of studies

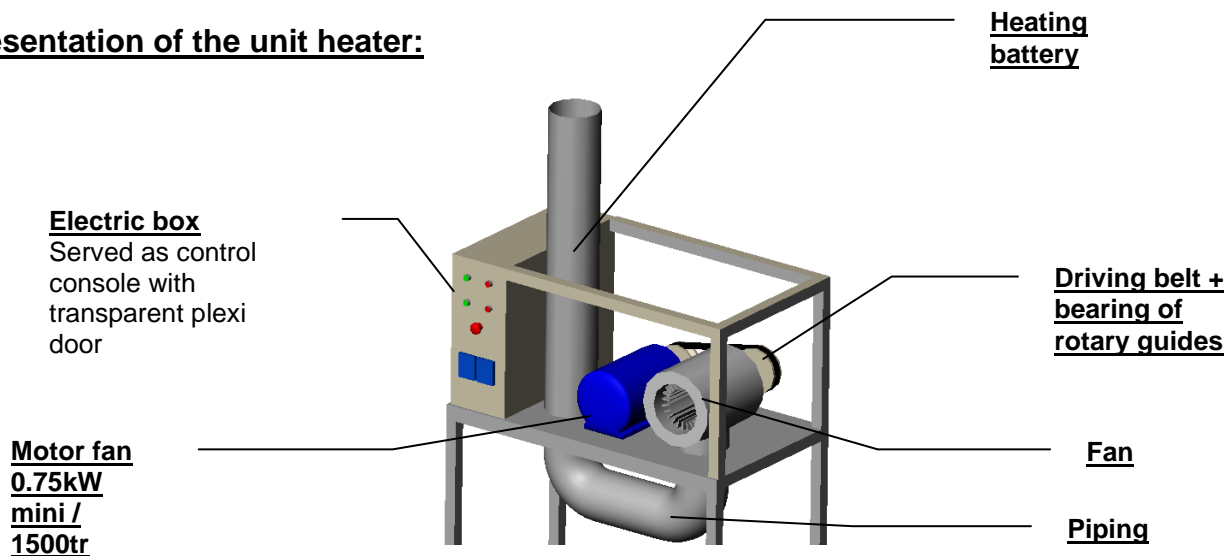


TEACHING APPLICATIONS *

- Visualization of the hot points on a system unit heater
- Highlighted of the traps inherent in the thermographic analysis
- Heating by Joule effect
- Mechanical heating
- Defects of cold bridges
- Adjustments, modification or replacement of the elements of the system following diagnosis

*: system of infra-red thermography essential to these applications

Presentation of the unit heater:



Noncontractual illustrations

Description of the material:

- 1 aluminum mobile **structure**
- 1 **electric box** with transparent cap allowing the piloting of installation three-phase 400V 220V for a total power of more than 3kW
- 1 mini **low tension battery three-phase** 2kW
- 1 system of **transmission of power** per belt
- 1 **polyphase motor** 0.75kW mini
- 1 **kit of electric defects** (heating of cables, cutting or imbalance of phases...)
- 1 **kit of thermal defects** (thermal conduction of an electric cable, defect of cold bridge, breakdown of the cooling system of an engine)
- 1 **kit of mechanical defects** (heating of a stage, misalignment of the pulleys)
- 1 **thermometer** with contact
- 1 **digital multimeter**
- all accessories provided in a **suitcase**

In option:

- 1 **infra-red camera**
 - portable
 - with color screen
 - batteries
 - charger
 - instruction manual
 - case of arrangement

The systems design allows a great speed of implementation of all practical work

Utilities:

- **electricity:** tri 380V + neutral/16A mini
- **room** of size sufficient for dissipation of the calories related to the heating of the installation