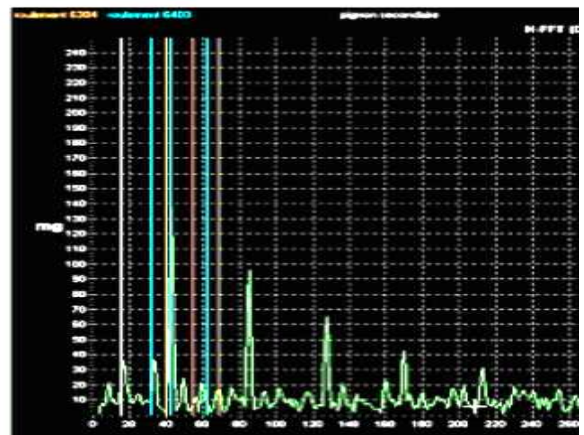
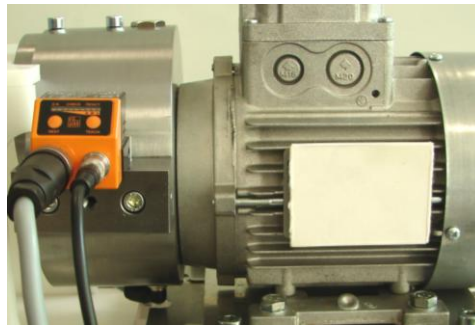


Vibratory monitoring of industrial facilities

DESCRIPTION

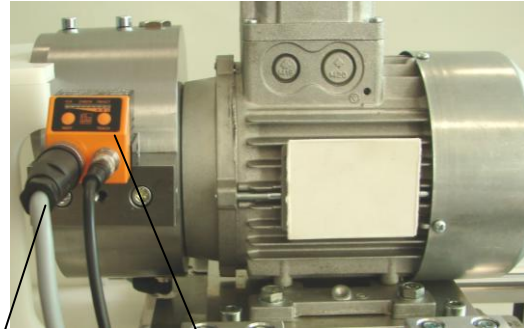
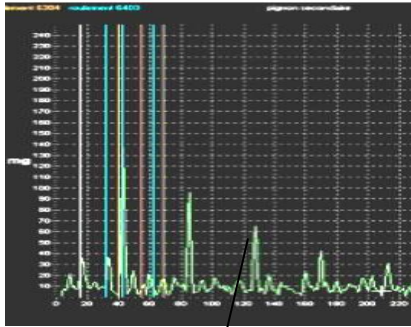
- The vibratory kit of analysis allows the precise identification of an element of a defective revolving machine
- This kit is delivered in a case with vibratory analyzer, accelerometer, software, teaching handbook and technical file.
- Industrial material.
- The didactic interest of the MBP 013 is directed towards various levels and fields of studies going from the BEP to the BTS.



TEACHING APPLICATIONS

- Monitoring uninterrupted of an installation/release of alarm machine
- Kinematic study of the machine/Impact the real speed of the system on the analysis
- Method of spectral analysis + demodulation for identification specifies failing element (pinion, bearing, bad driving alignment/pump, unbalance...)

Presentation of the system:



Visualisation of demodulated spectres on software and on "watched objects"

In / Out for MBP 100 or MBP 010 linking

Module of vibratory supervision

Noncontractual illustrations

Description of the components

- 1 **module of vibratory monitoring** continues with accelerometer and integrated memory
- Compatible with machines turning of **120 with 12000tr.min-1**
- **entries:**
 - real **rotational frequency**
 - **parameter setting** of the system since PC (PC not provided/provided cable)
- **exits:**
 - **export** of the data and measurements towards PC (PC not provided/provided cable)
 - **alarms** machine via provided M12 connector and cable.
- 1 **adapter threaded** for fast fixing on described tapped supports below
- 1 **case of food**
 - allowing **software:**
- **the definition of the parameters** of control (a number of spectral lines to supervise, frequency of these lines, types of bearings, reports/ratios of reductions...)
- **the loading of these parameters** towards the vibratory module of monitoring
- **exploitation** of **measurements** and **analysis** of the demodulated spectrum

MBP 013



- 2 **supports tapped** for fixing of the module:
- directly mountable on MBP 011
- material steel
- adaptable by screwing on MBP 100 as on the majority of the revolving machines

Option: Control process for MBP 011

- release of an orange luminous beacon in the event of crossing of the threshold of intermediate alarm of level
- forced stopping of the engine of the MBP 011 in the event of crossing of the threshold of alarm of higher level

Utilities:

Electricity: Integration with the electric box on MBP010 or MBP 100

Compatibility in the range:

This kit is designed to be used on the basis of **MBP 011**
It is also compatible with the majority of the revolving machines.