

Free and forced convection

DESCRIPTION

- The convection bench consists of a vertical rectangular duct, which is equipped with an opening. Various types of exchangers may be placed in this opening for testing purposes.
- Free convection takes place through a simple grating. Forced convection is generated by a variable speed fan, situated in the upper section.
- The instruments provided allow for measuring various parameters when testing exchangers.



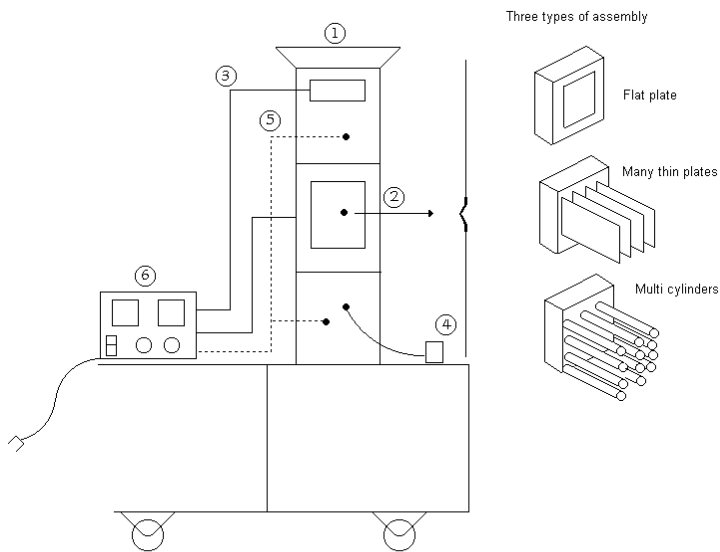
SUGGESTED APPLICATIONS

Demonstration of free and forced convection
Measurement of the heat transfer in free or forced convection with the following designs :

- Vertical and flat plate
- Exchangers with many lines of cylinders

Exchangers with vertical and thin plates.

PTC 060



1. Rectangular air duct and its frame
2. Test plate (three types of assembly)
3. Adjustable speed fan
4. Hot wire anemometer
5. Temperature probes
6. Control box equipped with :
 - Heating control
 - Speed fan control
 - Temperature display

UTILITIES

Electricity: 230 V single phase - 50/60 Hz

INSTALLATION VOLUME

Length : 800 mm
Width : 500 mm
Height : 1800 mm
Weight : 30 kg