

Heater dissipation bench



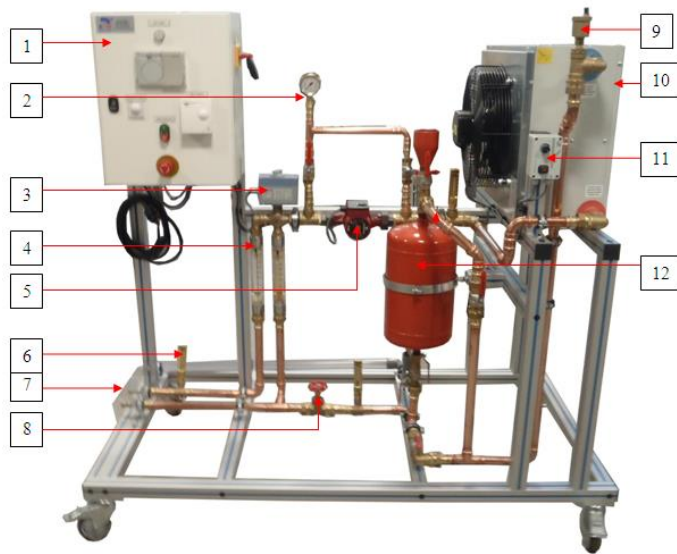
SPECIFICATIONS

Declaration of conformity EC.
ISO 9001 certification.
Design, manufacturing, testing, commissioning in our workshops.
Aluminum profiled chassis on wheels
Multidirectional with brakes.
Bench comprising:
1 heater with speed variator
1 injection bottle
1 valve 3 ways with 3-point regulation
1 circulator
Measuring members of the key points of the installation
1 electric box incorporating the power and the control
2 self-sealing couplings for connection on heating network

PEDAGOGICAL APPLICATIONS

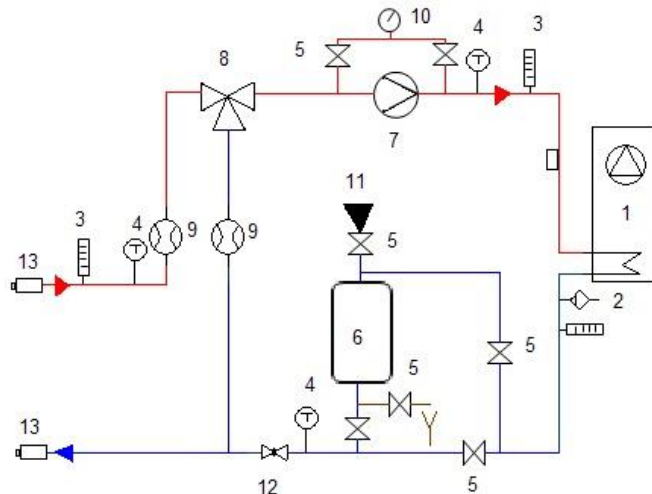
- Study of a heater.
- Study of the regulation by 3-way valve.
- Setting of a heating curve.
- Functioning of an injection bottle.
- Calculation of thermal efficiency.
- Comparison of efficiencies.
- Hydraulic connection
- Preventive and curative maintenance.
- Mapping of electrical and hydraulic diagrams.
- Calculation of exchanges in a transmitter

AER 150



Technical characteristics :

N°	DESIGNATION
1	Electrical cabinet
2	Manometer 0/4 bars
3	3-way valve servomotor
4	Flowmeter
5	Circulator 25/60 180
6	Brass thermometer 0/100°C
7	Quick coupling of type coupling 3/4
8	Flow rate regulating valve (to seal)
9	Automatic air vent
10	Heater 30Kw
11	Speed variator
12	Injection bottle of treatment products



- 1- Heater 28kW
- 2-Automatic air vent
- 3- Thermometer 0/120°C
- 4. Temperature probe
- 5. Isolation valve
- 6- Injection bottle
- 7- Circulator
- 8- Motorized 3-way valve
- 9- Flowmeter
- 10- Manometer
- 11- Funnel for filling the injection bottle
- 12- flow rate regulating valve (seal)
- 13- self-sealing couplings of type coupling

Accessories included:

Pipes recognition labels

Utilities:

All utilities must be with a maximum 2.5 meter from the bench

Electricity : 230Vac - 50 Hz -16 A
Dimensions (LxPxHmm) : 2000 x 800 x 1900

Weight (in Kg):120



Non-contractual photo

Electrical cabinet with a differential circuit breaker 30 mA