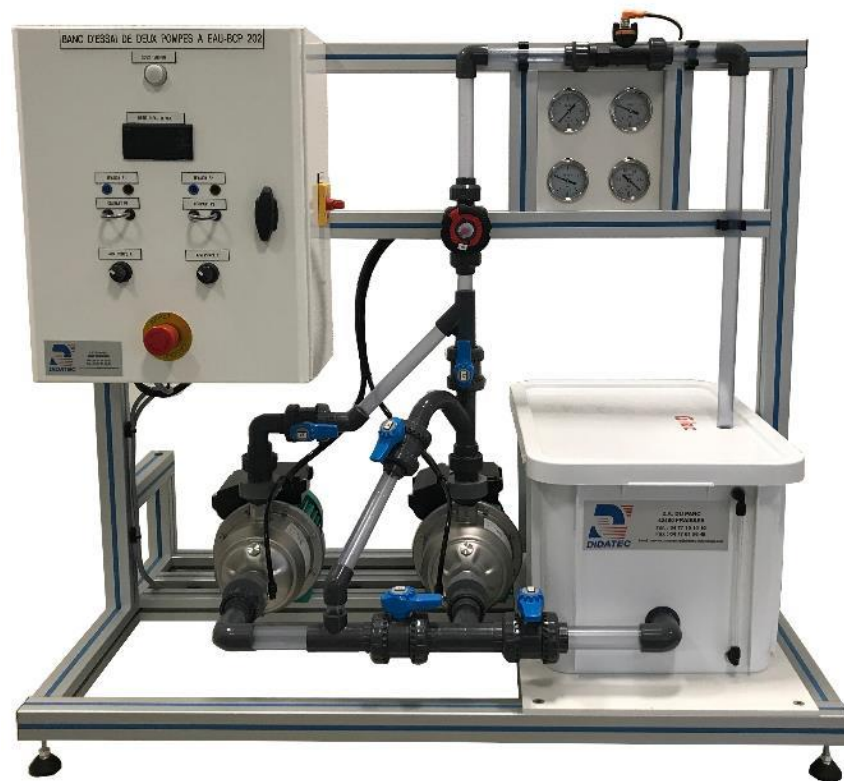


## 2 WATER PUMPS TRAINER



---

### Experimental capabilities

---

- Identification of the components of a pumping system
- Study of 2 centrifugal pumps of identical characteristics
- Study of the QH curves of the pumps
- Study of serial coupling
- Study of parallel coupling
- Study of the efficiency of a pump

**Pumps operate at fixed speed**

## Operating principle

The BCP202 trainer allows the study of centrifugal pumps of the same characteristics.

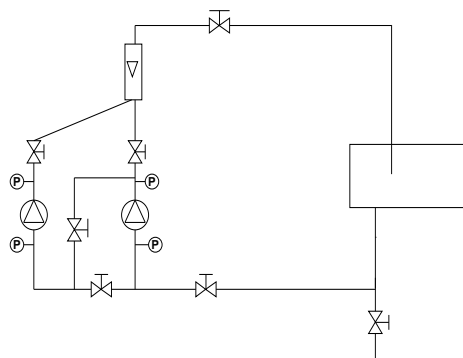
It is equipped with two pumps, the latter of which can be studied alone, coupled in series or in parallel. Students will have to select the different couplings and measure the following characteristics: flow, suction pressure, discharge pressure, electrical power for different operating points.

The bench has a tank to work under load and the pumps allow water to circulate in the circuit.

The rugged design of this equipment makes it perfectly suited for use in schools.

Its anodized aluminum structure gives it great robustness and flexibility of integration into your premises. The manufacture of this equipment complies with the European machinery directive.

## Illustrations



The trainer has a power supply box in accordance with European electrical standards with general power disconnector, white voltage presence light, emergency stop button, ground connection and differential protection.

Double-well measuring bushings and measuring wires measure the current and voltage of each pump.

## Technical details

### 1. Plastic feed tank:

- Volume: 55 L
- Lateral indication of the level
- Drain valve

### 2. Two centrifugal pumps with fixed speed:

- Stainless steel cast body
- Stainless steel axle
- Stainless steel turbine
- 4 m<sup>3</sup>/h, 20 mCE, 2900 tr/min, 0,37 kW

### 3. Vortex electronic flow meter:

- Signal output 4... 20 mA
- Scale: 9 - 150 L/min

### 4. Circuits :

- PVC piping and valves
- Discharge diaphragm flow control valve
- A ball valve set for series/parallel coupling

### P : Manometer :

- 4 needle pressure gauges diameter 63mm
- 2 Aspiration
- 2 Refoulement

### Accessory included:

- Portable multimeter with clamp ammeter.

## Services required

- Electrical supply : 230 Vac – 50 Hz – 10 A
- Power supply type : 1 phase + Neutral + Earth
- Tank fill (water) : 15 L/min – 3 bars
- Dimensions: (LxWxH mm): 1100 x 650 x 940
- weight (Kg): 70

Note : if the equipment installation is operated by our staff, all supplies and exhaust connections required must stand at less than 2m from the machine

## Documentation

- User's manual
- Pedagogical manual
- Technical documentation of the components
- Lab exercises
- Wiring diagram
- Hydraulic diagram
- Certificate of conformity CE