

Charpy Mouton 70J



SPECIFICATIONS

- Certificate of conformity CE.
- ISO 9001 Certification.
- Manufacturing by our workshops.
- Encasing in anodised aluminum
- Aluminum chassis.

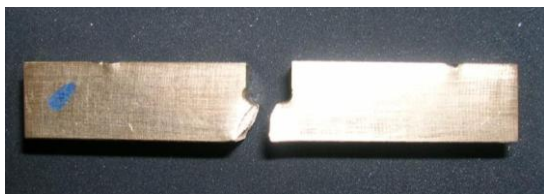
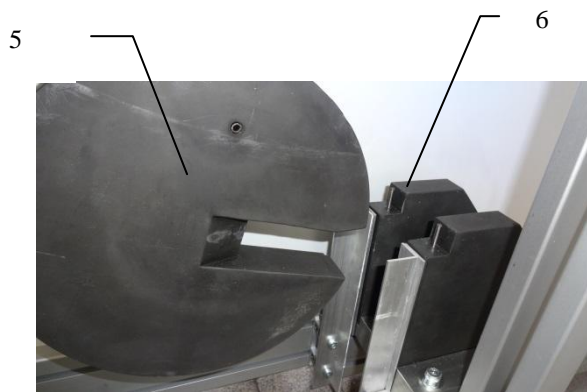
Description

- Resilience tests
- Impact Pendulum 70 J
- Measurement of the image of the absorbed energy on dial
- Robust design.
- Secured tests - launch of the impossible test as long as the access door at the interior of the machine is not closed
- Manual initial position of the pendulum.

Pedagogical activities

- **Determination of the energy absorbed during the shock**
- **Determination of resilience**
- **The rupture surface evaluation**
- **Comparison of different materials**

SMC 070



Technical specifications:

1. Anodized aluminum chassis.
2. Protective aluminum enclosure with transparent access door in polycarbonate
3. Implementation of initial position manually of the impact hammer
4. Test launch pad
5. Impact hammer 70J guide by ball bearings with specific heat treatment for optimum service life.
6. Test tube support made in treated steel
7. Graduated dial for determining the energy absorbed.

Accessories included :

- Set of 8 test tubes

Utilities :

All utilities must be at 2.5 meters maximum of the bench

- Envelope dimensions (WxDxH mm): 1500 * 1500 * 800
- Weight (Kg): 150

Documentation:

- Instruction manual
- Training manual
- Technical file
- Certificate of conformity EC